



GMT MONTHLY MEMBERSHIP PROGRESS REPORT

Results as of: 4/30/2017

Multiple District 1

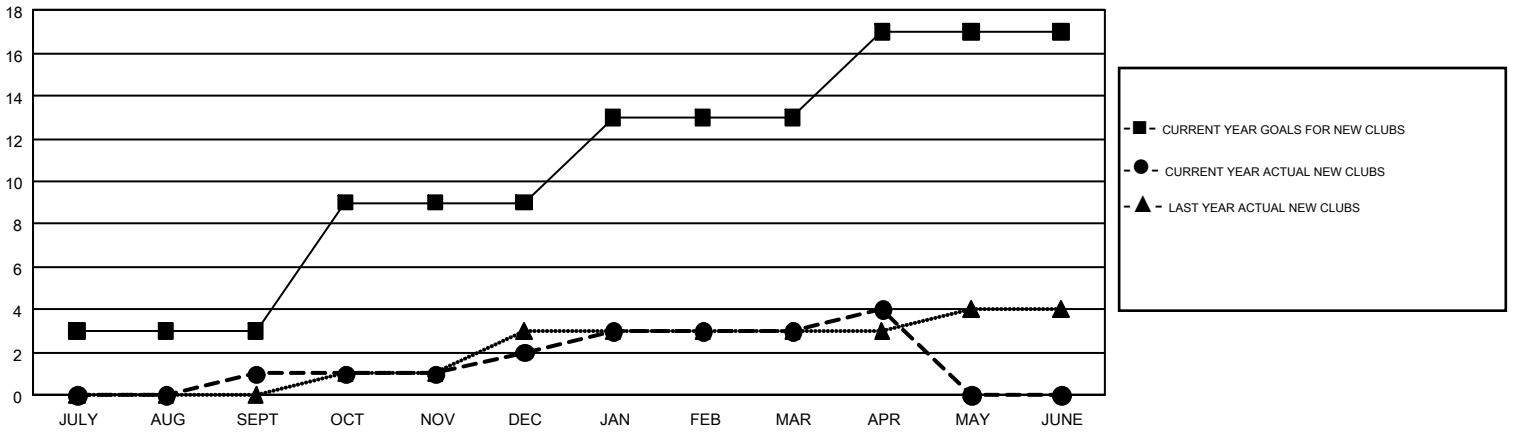
LOCATION: ILLINOIS

GMT: THOMAS MATNEY

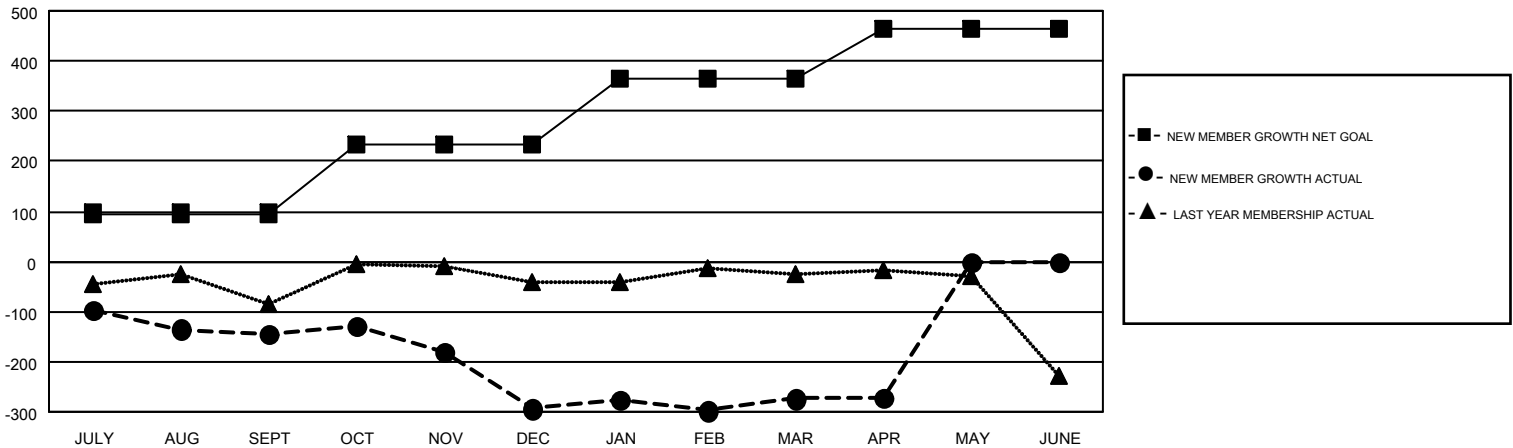
GMT CA 1

| Clubs | | | | Members | | | |
|-----------------------|---------------|-----------|---------------|-----------------------|--|--|--|
| RESULTS FOR 2016-2017 | | | | RESULTS FOR 2016-2017 | | | |
| QUARTER | NEW CLUB GOAL | NEW CLUBS | DROPPED CLUBS | QUARTER | NEW MEMBER GROWTH NET GOAL (not reinstated or transfers) | NEW MEMBER GROWTH ACTUAL (not reinstated or transfers) | DROPPED MEMBERS ACTUAL (including transfers) |
| JULY/AUG/SEPT | 3 | 1 | 0 | JULY/AUG/SEPT | 96 | 271 | 415 |
| OCT/NOV/DEC | 6 | 1 | 4 | OCT/NOV/DEC | 139 | 266 | 416 |
| JAN/FEB/MAR | 4 | 1 | 0 | JAN/FEB/MAR | 131 | 351 | 331 |
| APR/MAY/JUNE | 4 | 1 | 0 | APR/MAY/JUNE | 100 | 97 | 95 |

GOALS AND ACTUAL NEW CLUBS CUMULATIVE



GOALS AND ACTUAL MEMBERS CUMULATIVE



| | | | |
|---|--|---------------------------------------|-----------------|
| DROPPED CLUBS: 4 | 299 CLUBS OF 513 ADDED 1 OR MORE NEW MEMBERS | <u>GENDER DISTRIBUTION</u> | |
| <u>DROPPED MEMBERS</u> | | MALE | 11,331 (76.58%) |
| DECEASED | 180 | FEMALE | 3,465 (23.42%) |
| CLUB CANCELLED | 53 | TOTAL FAMILY UNIT MEMBERS 2,135 | |
| OTHER | 1,024 | | |
| TOTAL | 1,257 | | |
| CLICK HERE FOR CUMULATIVE MEMBERSHIP DATA | | FAMILY MEMBERS PAYING HALF DUES 1,103 | |